



# **21 Numbers on the Work of MPFA**

**Cheng Yan-chee**  
**Acting Managing Director**  
**Mandatory Provident Fund Schemes Authority**  
**14 Dec 2021**



# MPFA's Multi-faceted Roles



As  
protector  
of scheme  
members



As law  
enforcer



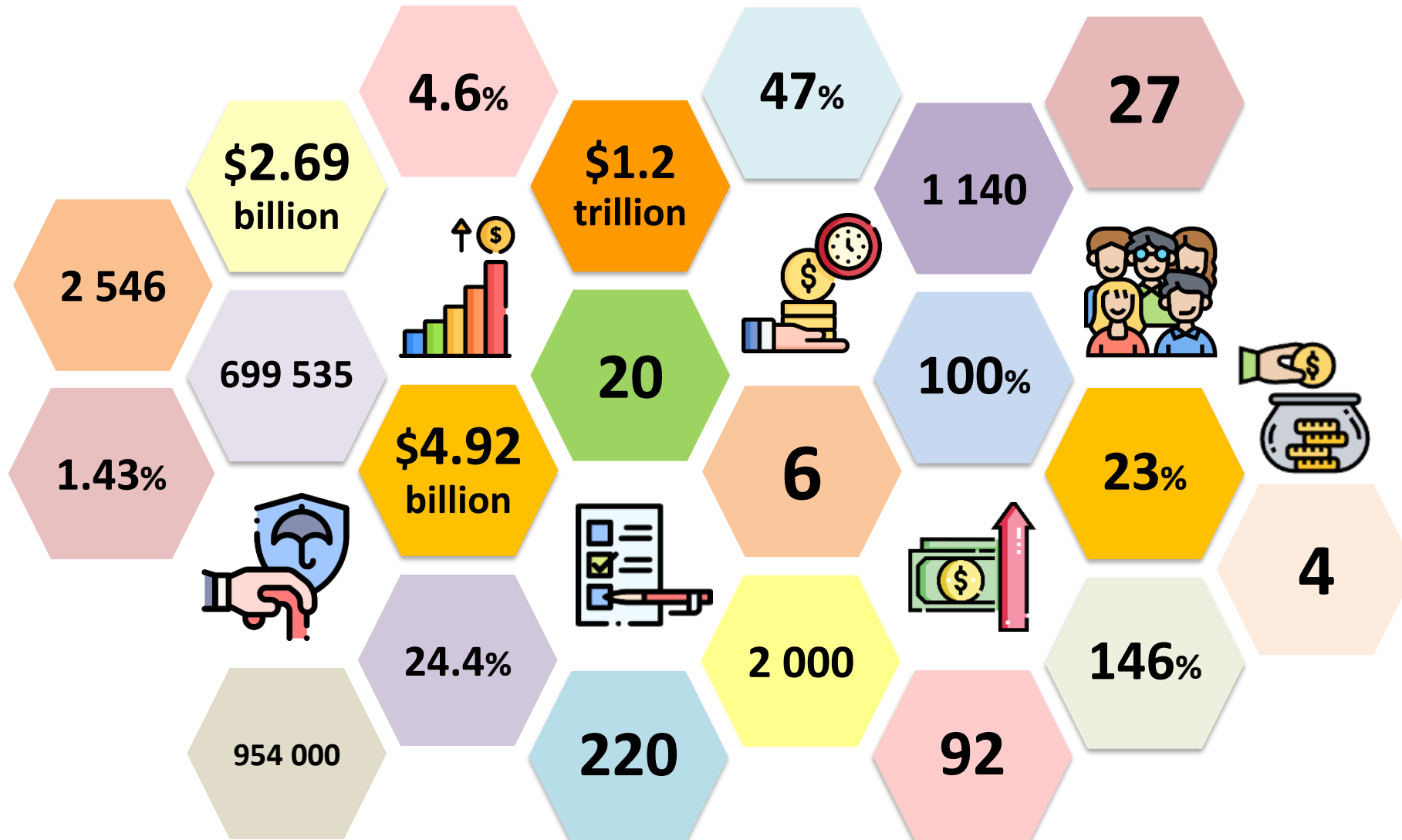
As  
industry  
regulator



As  
reforms  
advocate

# 21 Numbers

## - Dovetailing 21 Years of MPF



# As protector of scheme members

1

100%



**Enrolment of  
employers and employees**

# As protector of scheme members (cont'd)

2

23%



**Voluntary contributions  
as % of total contributions**

# As protector of scheme members (cont'd)

3

~\$1.2  
trillion



**AUM with 35% as net  
investment returns**

# As protector of scheme members (cont'd)

4

146%

**AUM as % of Government's  
fiscal reserve**



# As protector of scheme members (cont'd)

5

4.6%

Annualised net return





# As law enforcer

6

699 535

**Suspected non-compliance cases  
of employers**



# As law enforcer (cont'd)

7

1 140



**Supervisory compliance letters /  
circular letters on trustees**

# As law enforcer (cont'd)

8

~\$2.69  
billion



**Default contributions  
recovered from employers**

# As law enforcer (cont'd)

9

2 546

**Employers prosecuted for  
non-compliance**



# As industry regulator

10

6



**Core values of Governance Charter  
for MPF Trustees**

# As industry regulator (cont'd)

11

47%

**Increase in MPF intermediaries**



# As industry regulator (cont'd)

12

92

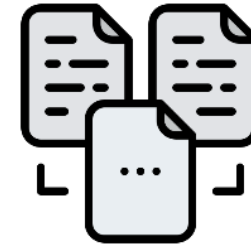
**Training sessions / seminars  
for intermediaries**



# As industry regulator (cont'd)

13

27



**MPF schemes after  
merging and restructuring**



# As industry regulator (cont'd)

14

220



**Low-fee funds**

# As industry regulator (cont'd)

15

1.43%

Fund Expense Ratio



# As reforms advocate

16

20

**Legislative amendments**



# As reforms advocate (cont'd)

17

4



**Statutory reviews of the  
min/max relevant income levels**

# As reforms advocate (cont'd)

18

954 000



**Requests for transferring  
MPF benefits under  
Employee Choice Arrangement**

# As reforms advocate (cont'd)

19

24.4%

強積金 MPF  
預設投資 DIS

**Accounts invested in Default  
Investment Strategy (DIS) /  
DIS funds**

# As reforms advocate (cont'd)

20

**\$4.92**  
**billion**

**Tax-deductible Voluntary  
Contributions**



# As reforms advocate (cont'd)

21

~2 000

Engagement and outreach activities







# Thank you

