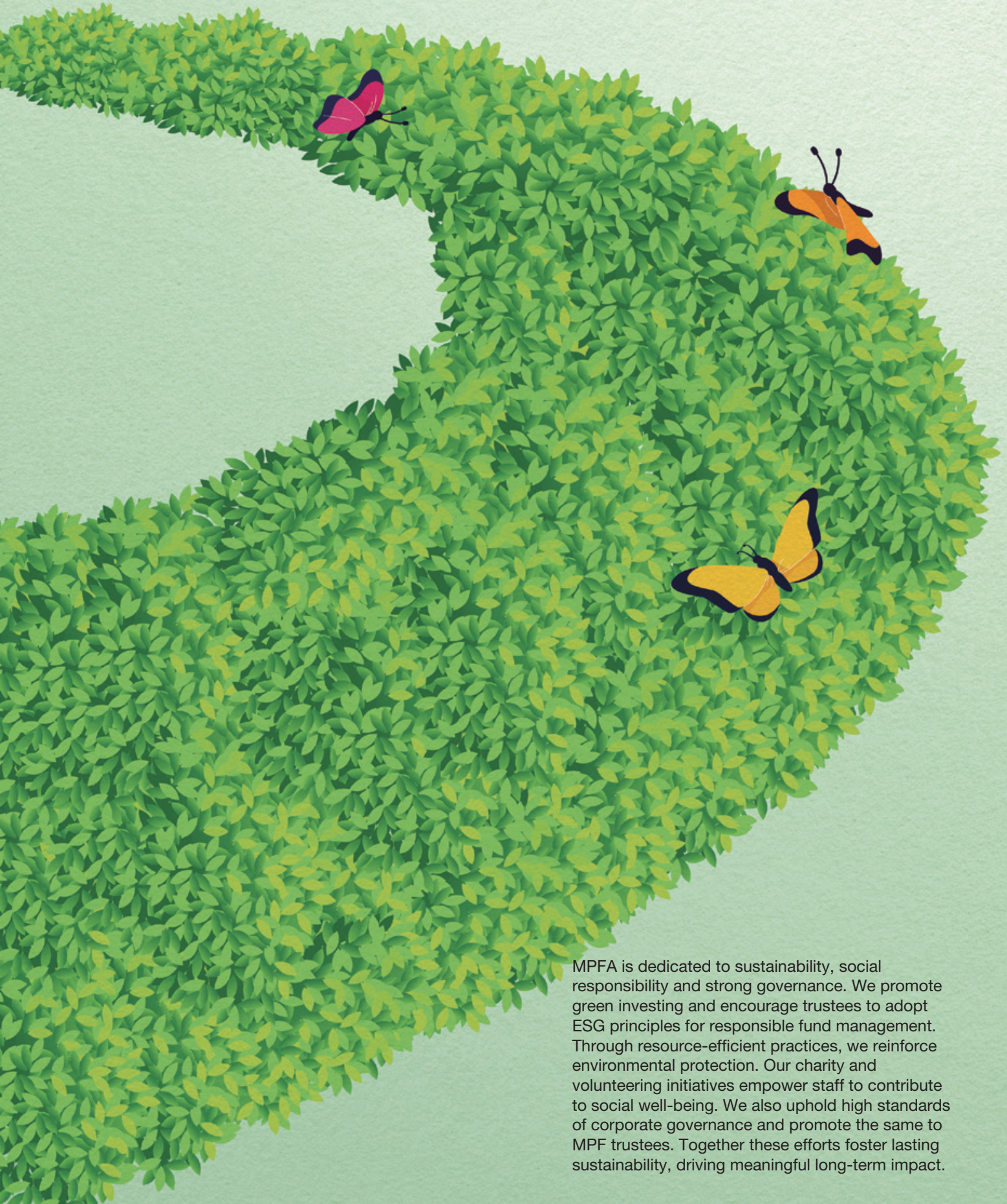


# Environmental, Social and Governance (ESG)



MPFA is dedicated to sustainability, social responsibility and strong governance. We promote green investing and encourage trustees to adopt ESG principles for responsible fund management. Through resource-efficient practices, we reinforce environmental protection. Our charity and volunteering initiatives empower staff to contribute to social well-being. We also uphold high standards of corporate governance and promote the same to MPF trustees. Together these efforts foster lasting sustainability, driving meaningful long-term impact.